



ACRYLIC EMULSIONS FOR HIGH-QUALITY ADHESIVES & SEALANTS

POLYMERS FOR
ADHESIVE FORMULATION

HIGH-QUALITY POLYMERS FOR ADHESIVES & SEALANTS FORMULATION

POLYMERS FOR ADHESIVE FORMULATION

Advanced acrylic emulsion technologies maximize the performance of adhesives. Our polymers are versatile and adhere to various substrates. These solutions are specifically designed to facilitate the formulation of tackified and non-tackified pressure-sensitive adhesives. You can rely on EPS to deliver a portfolio of proprietary adhesion technology that will give you the competitive edge.



REMOVABLE PRESSURE-SENSITIVE ADHESIVE POLYMERS

Equip your adhesives with polymers that deliver a high-strength bond for removable pressure-sensitive adhesives. These acrylic emulsions are vital components when it comes to manufacturing adhesives that meet performance objectives.

- Low peel
- Moderate tack
- High shear

Product	Peel Adhesion (PSTC-101)	Tack	Shear Adhesion (PSTC-107)
EPS® 2121	180° Peel 1.4 lbs/in	Loop Tack (PSTC-16) 2.3 lbs/in ²	> 10,000 minutes (1" x 1" x 1kg)
EPS® 2123	180° Peel 2.4 lbs/in	Polyken Probe (ASTM D2979) 350 g/cm ²	> 10,000 minutes (1" x 1" x 1kg)
EPS® 2128	180° Peel 1.9 lbs/in	Polyken Probe (ASTM D2979) 82 g/cm ²	> 10,000 minutes (1" x 1" x 1kg)
EPS® 2130	90° Peel 9.0 oz/in	Polyken Probe (ASTM D2979) 262 g/cm ²	2,600 minutes (0.5" x 0.5" x 500g)
EPS® 2156	180° Peel 11.0 oz/in	Polyken Probe (ASTM D2979) 230 g/cm ²	> 10,000 minutes (1" x 1" x 1kg)

The data on this brochure represents typical values. Since application variables are a major factor in product performance, this information should serve only as a general guide. EPS assumes no obligation or liability for use of this information. UNLESS EPS AGREES OTHERWISE IN WRITING, EPS MAKES NO WARRANTIES, EXPRESS OR IMPLIED, AND DISCLAIMS ALL IMPLIED WARRANTIES INCLUDING WARRANTIES OF MERCHANTABILITY OR FITNESS FOR A PARTICULAR USE OR FREEDOM FROM PATENT INFRINGEMENT. EPS WILL NOT BE LIABLE FOR ANY SPECIAL, INCIDENTAL, OR CONSEQUENTIAL DAMAGES. Your only remedy for any defect in this product is the replacement of the defective product, or a refund of its purchase price, at our option. Revision Date 07/2021



PERMANENT PRESSURE-SENSITIVE ADHESIVE POLYMERS

EPS® 2113

Reinforce permanent type applications when you utilize EPS 2113, an acrylic latex for pressure-sensitive adhesives. This resin has proven to be useful in formulating plasticizer free pigmented caulks, and in film-to-film lamination.

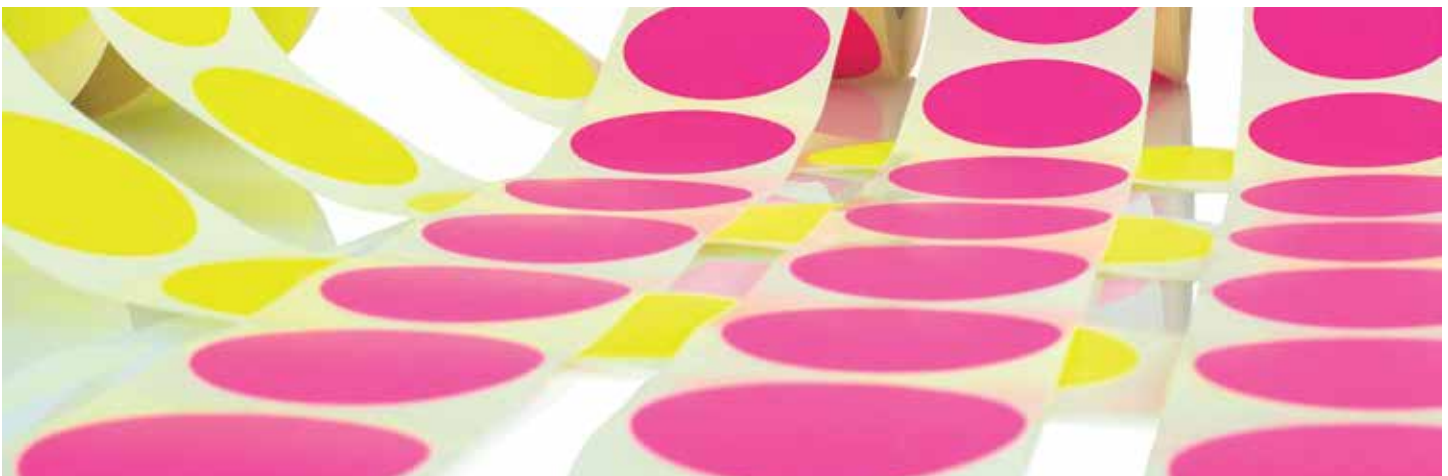
- Exceptional clarity
- Excellent moisture resistance
- Broad adhesion
- Non-yellowing

EPS® 2127

Strengthen your tape and label pressure-sensitive adhesive applications with a high-solids acrylic copolymer emulsion. EPS 2127 exhibits an excellent balance of adhesive properties and can be used in both tackified and non-tackified adhesive formulations.

- Exceptional clarity
- Non-yellowing
- Made without APEO surfactants
- FDA 175.105 compliant

Product	180° Peel (PSTC-101)	Tack	Static Shear (PSTC-107)
EPS® 2113	2.0 lbs/in	Loop Tack (PSTC-16) 2.0 lbs/in ²	> 10,000 minutes
EPS® 2127	3.2 oz/in	Polyken Probe (ASTM D2979) 430 g/cm ²	200 minutes (0.5" x 0.5" x 500g)





THE EXPERTISE BEHIND THE INNOVATION

Engineered Polymer Solutions (EPS) produces performance-based polymers and resins, specifically designed for our customers who develop innovative products for the architectural, industrial and construction coatings industries, as well as adhesives. With a direct connection to technical support, next-generation technology and unparalleled customer service – we help your business succeed.

Our highly-responsive R&D experts create the solutions of the future. EPS has unmatched technical insight, with modern, world-class manufacturing facilities and decades of test

fence exterior exposure data from a variety of climates. We are committed to exceeding our customers' expectations by supplying resins with proprietary technology that enables our customers to create high-performance coatings.

At EPS, we continuously listen and are ready to respond to customer needs, with strong technical, scientific and industry knowledge – allowing you to bring the best product to market and enhance your competitive edge. Formulate your architectural, industrial, construction and adhesive products with a wide range of resins supplied by EPS.

To learn more, visit epscca.com

E-240643-BR 05/2020