

EPS[®] 2719

Polymer for Cool Roof Coatings

BENEFITS

Resistance to asphalt bleed-through

Low temperature flexibility

Adhesion to common roofing substrates

Dirt Pick Up resistance

UV light resistance

No APEO containing raw materials

MARKET SEGMENTS

Roofing

CHEMISTRY

Acrylic Polymer

Technical Data Sheet



EPS[®] 2719 is an all-acrylic emulsion designed to essentially eliminate asphalt bleed through in cool roof coatings while maintaining flexibility and toughness. Roof coatings based on EPS[®] 2719 also offer UV and dirt pick-up resistance and excellent adhesion to asphaltic and other common construction substrates.

Specifications

Weight Solids	55.0 +/- 0.7%
Weight/Gallon	8.85 +/- 0.10
pH	8.25 +/- 0.25

Typical Properties

Volume Solids	52.1 +/- 0.7%
T _g	-4° C
Volatile(s)	Water (44.84%) Ammonia (0.16%)

Suggested Formulations

EPS[®] 2719 SR1 - White Roof Coating

Excellent balance of properties

- Excellent resistance to bleed-through on fresh or repaired asphalt
- Flexible at temperatures as low as -10°C
- Adhesion to asphalt, PVC, metal and other common roofing substrates
- Resistance to dirt pickup
- UV light resistance
- Excellent toughness with both high tensile strength and elongation
- Environmentally friendly APE-free raw materials
- Can be used in both base coat and top coat formulations
- Application by spray, roller and brush with easy soap and water cleanup

EPS® 2719

Asphalt Bleed Blocking

TECHNICAL SUPPORT

The following guidelines are offered to assist the paint formulator in achieving the high performance properties offered by EPS® 2719

SDS

For details on health, safety and handling information, Safety Data Sheets (MSDS) are available at www.epscca.com.

For more information on any of our products or services please visit us on the Web at: www.epscca.com

The data on this sheet represent typical values. Since application variables are a major factor in product performance, this information should serve only as a general guide. EPS assumes no obligation or liability for use of this information. **UNLESS EPS AGREES OTHERWISE IN WRITING, EPS MAKES NO WARRANTIES, EXPRESS OR IMPLIED, AND DISCLAIMS ALL IMPLIED WARRANTIES INCLUDING WARRANTIES OF MERCHANTABILITY OR FITNESS FOR A PARTICULAR USE OR FREEDOM FROM PATENT INFRINGEMENT. EPS WILL NOT BE LIABLE FOR ANY SPECIAL, INCIDENTAL OR CONSEQUENTIAL DAMAGES.** Your only remedy for any defect in this product is the replacement of the defective product, or a refund of its purchase price, at our option

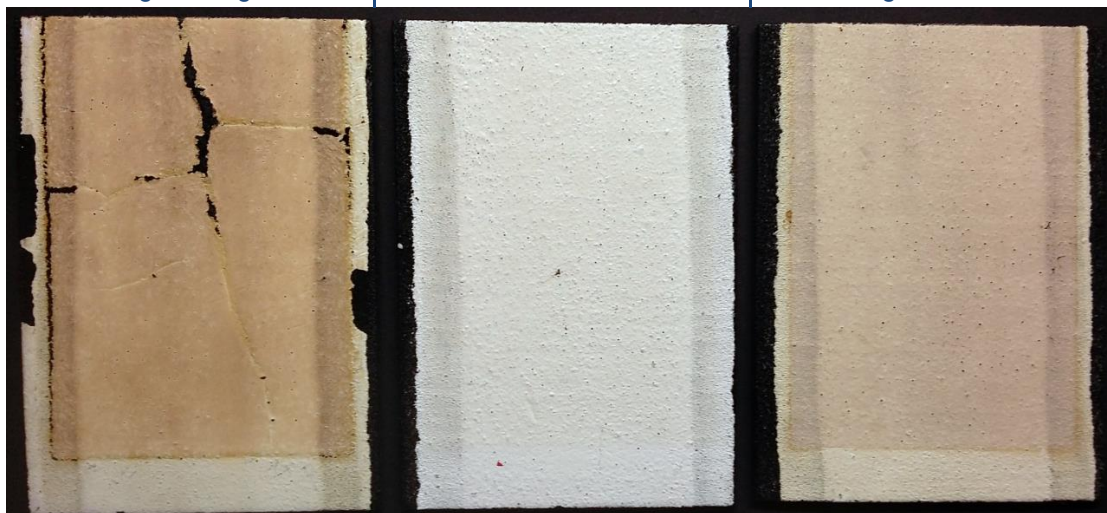
EPS Materials
1400 N. State Street
Marengo, IL 60152

Email: info@epscca.com

www.epscca.com

Cust. Service: Phone 1-800-654-4242
Fax 1-815-568-4145

Commercial Base Coat	EPS® 2719 SR1 Starting point formulation	Commercial Top Coat
<ul style="list-style-type: none">➤ Significant bleed-through➤ Delta E: 30.9➤ Cracking/staining from	<ul style="list-style-type: none">➤ Virtually unchanged➤ Delta E: 6.7➤ Effects of UV are trivial	<ul style="list-style-type: none">➤ Significant bleed-through➤ Delta E: 24.3➤ Staining from UV



Samples were prepared and aged according to the following procedure:

- Coatings were applied to fresh modified bitumen using a 20 mil draw down bar
- Films were allowed to cure three days under ambient conditions
- Samples were exposed 500 hours in QUV cabinets according to ASTM G154
- Delta E was calculated from L a b color measurements made on each film before and after QUV weathering

EPS® 2719

TECHNICAL SUPPORT

The following guidelines are offered to assist the paint formulator in achieving the high performance properties offered by EPS® 2719

SDS

For details on health, safety and handling information, Safety Data Sheets (MSDS) are available at www.epscca.com.

For more information on any of our products or services please visit us on the Web at: www.epscca.com

The data on this sheet represent typical values. Since application variables are a major factor in product performance, this information should serve only as a general guide. EPS assumes no obligation or liability for use of this information. **UNLESS EPS AGREES OTHERWISE IN WRITING, EPS MAKES NO WARRANTIES, EXPRESS OR IMPLIED, AND DISCLAIMS ALL IMPLIED WARRANTIES INCLUDING WARRANTIES OF MERCHANTABILITY OR FITNESS FOR A PARTICULAR USE OR FREEDOM FROM PATENT INFRINGEMENT. EPS WILL NOT BE LIABLE FOR ANY SPECIAL, INCIDENTAL OR CONSEQUENTIAL DAMAGES.** Your only remedy for any defect in this product is the replacement of the defective product, or a refund of its purchase price, at our option

EPS Materials

1400 N. State Street
Marengo, IL 60152

Email: info@epscca.com

www.epscca.com

Cust. Service: Phone 1-800-654-4242
Fax1-815-568-4145

Suggested Formulation

Formula: EPS® 2719 SR1 - White Roof Coating (02/17)

Pounds	Gallons	Raw Material	Supplier	Instructions
154.90	18.60	Water		Add in order with good agitation
11.00	1.25	Tamol 165A	Dow	
3.00	0.40	28% Ammonium Hydroxide		
5.00	0.67	Foamaster 111	BASF	
60.00	1.80	Ti-Pure R-960	Chemours	
400.00	17.72	Duramite	Imerys	Grind 20 minutes until Hegman >5 is attained
0.00	0.00			
5.00	0.67	Foamaster 111	BASF	Add to grind in order with mixing
490.00	55.37	EPS® 2719	EPS	
6.74	0.85	Texanol	Eastman	
10.87	1.13	Polyphase 663	Troy	
11.00	1.27	Propylene Glycol		Premix and add slowly with good agitation
3.00	0.27	Natrosol 250HBR	Ashland	
1160.51	100.00	Total		

Formulation Parameters

Weight Solids	64.59
Volume Solids	50.63
VOC Level	40 g/L
Weight/Gallon	11.61 lb/gal

Typical Properties

Viscosity	100-110 KU
pH	8.0 – 9.0
Color	White